

# SPLICE DETECTION SYSTEM

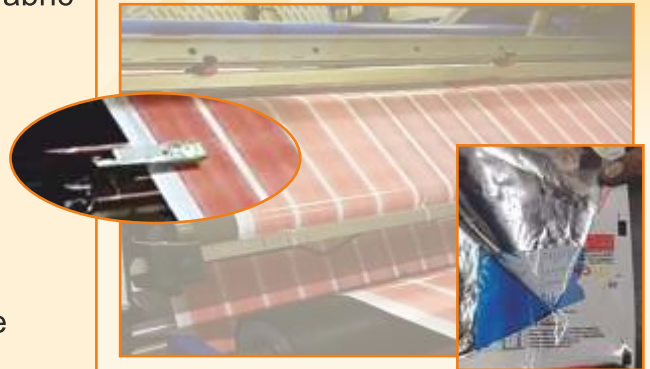
Splice/Joint detection system either visible (top level) or nonvisible (sandwich joints) useful for converters, fabric manufacturers, raffia, blown film machines.

## FEATURES

- Counts number of joints.
- Measure distance between joints.
- Machine stops once joint detected with alarm signal.

## BENEFITS

- It is touch panel operated and programmed to generate interlock/alarm in machine control.
- In case of flexographic machine, momentary opening of the impression cylinder leads to incremental life of plate.
- In case of gravure printing machine, preset data triggers rewind splice at the time of extra joints.
- At converting stage (Slitting) quality output fulfils customer requirement without any chances of output reel (sandwich joints/splice joints).



# REPEAT LENGTH MEASUREMENT

## FEATURES

**Accurate length within +/-0.2mm per meter of printed substrate**

- **On-Line accurate print length repeat measurement**  
Able to meet customers quality standards with minimum waste at higher press speeds.
- **Better management of tension control (optional)**  
Allows minimum pressure to be used on nips roll and between the nips, this means less web tension, less wear and tear, together with more sensitive tension control.
- **Improve control of flexible substrate**  
With better management of tension between in-feed and out-feed. Substrate can be printed / laminated at higher speed.



## BENEFITS

- It constantly monitors the print repeat length.
- Enables the operator to control the substrate length.
- Ensures the product meets the customers length and snap-back specification.
- Archive records for future reference.

